

# ONCAMPUS PARIS

**ONCAMPUS**  
PARIS

**KEDGE**  
BUSINESS SCHOOL

ONCAMPUS Paris is proud to work in partnership with KEDGE Business School to offer high-quality preparation programmes for international students on campus in Paris.

KEDGE Business School is a triple accredited business school and Grande École that ranks among the best business schools in Europe.

KEDGE has four main campuses in France, located strategically in the vibrant cities of Paris, Bordeaux, Marseille and Toulon. All campuses are modern and equipped with state-of-the-art facilities enabling them to provide a first-class education and a rewarding life experience to students from all over the world.

Students can study selected undergraduate courses and a wide range of courses at postgraduate level, within nine main subject areas: arts management, finance, international trade, management, marketing, purchasing, supply chain, sustainability and wine.



**Just over  
an hour**

**to London or  
Switzerland by air**

as well as great train links to  
other cities such as Brussels  
and Amsterdam



**More of the world's top 100 most  
innovative companies are in France  
than in any other European country.**

Établissement d'Enseignement Supérieur Privé (Private Higher Education Institution)

## Contents

### + About KEDGE Business School

School highlights	04
Programme highlights	06
An international experience	08
Paris campus	10
Marseille campus	12
Bordeaux campus	14
Progression degrees	16

### + About ONCAMPUS

How ONCAMPUS works	18
Your route to a degree	19
Our programmes:	
International Foundation Programme (IFP)	20
International Pre-Master's Programme (IPMP)	22

### + About Student Life

Guide to Paris, France	24
------------------------	----

### + Applying

Next steps	28
------------	----



# School Highlights

KEDGE Business School research professors collaborate across five Centres of Excellence and four Centres of Expertise, promoting research through innovative teaching and learning that underpin KEDGE's undergraduate and postgraduate programmes.



## Triple Crown Accreditation

KEDGE Business School is triple accredited and ranks among the best business schools in Europe

Ranked  
**7th**  
best French  
business school

Financial Times 2022

Ranked   
**2nd**  
best French business  
school for research in  
**Business Administration**

Shanghai World Global  
Ranking 2022

## KEDGE Business School

A 150+ year-old institution with an international reach



OVER  
**14,800**  
students worldwide,  
**23%** of whom are  
international

**90%**  
of students are  
hired within  
six months of  
graduating

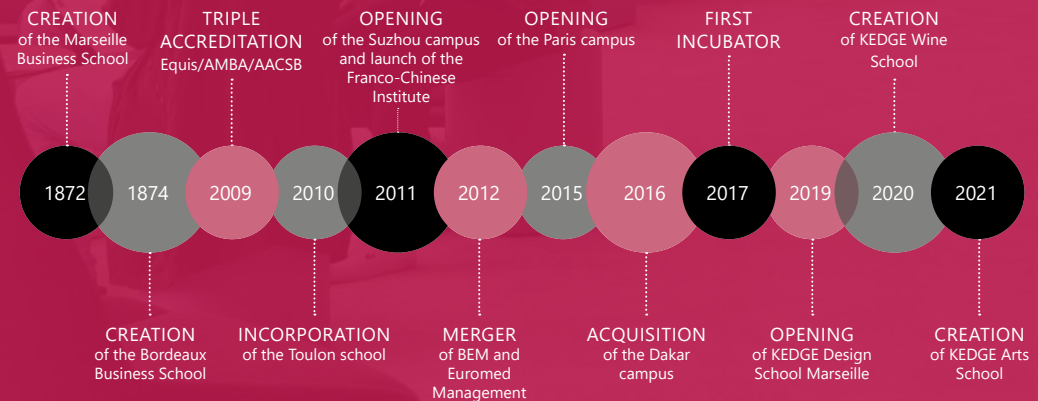
Around  
**275\*** partner  
universities  
worldwide offering  
exchange or double  
degree opportunities

\*more than 75% of our partners are accredited

Nearly  
**50%**  
of KEDGE  
professors are  
international



## KEDGE HISTORY



# Programme Highlights

KEDGE Business School offers a portfolio of 38 management and design programmes for students and industry professionals. KEDGE also provides customised educational programmes for businesses at national and international levels.



## International BBA

The **most international** four year undergraduate degree in France

## KEDGE Bachelor's Voted 5th Best French Bachelor

Le Parisien Etudiant 2022



MSc International Business ranked



## 1st

EdUniversal International 2022



MSc ISLI - Global Supply Chain Management

## Ranked 2nd

EdUniversal International 2022

MSc MVS Wine & Spirits Management

## Ranked 1st

EdUniversal International 2022

MSc International Trade and Logistics

## Ranked 5th

in France

EdUniversal International 2022

## No. 1



**e-commerce programme** for MSc Digital Marketing & Sales with students encouraged to earn Google Ads and Google Analytics certifications

French Tech 2021 Ranking

MSc Sustainable Finance

## Ranked 4th

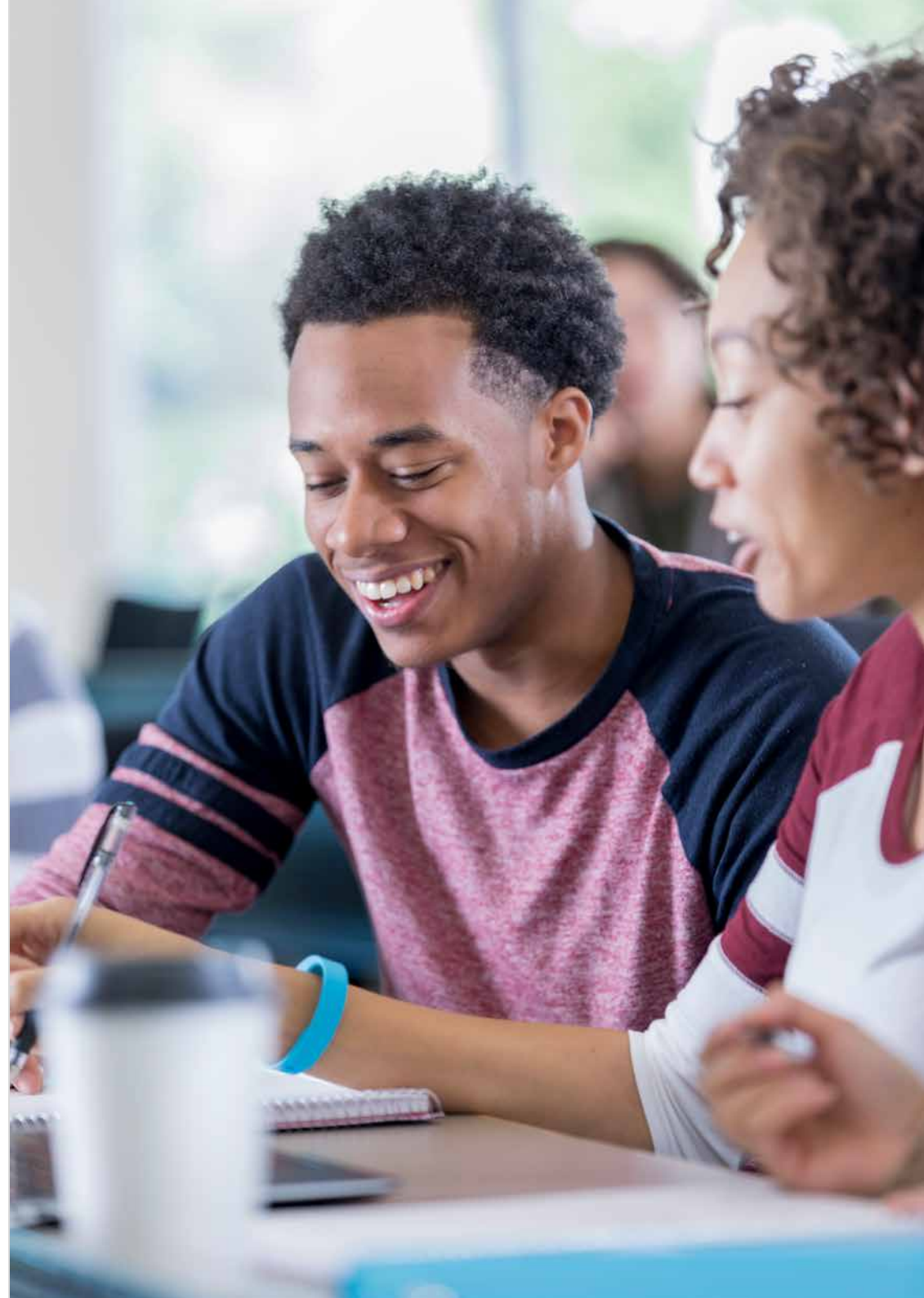
is the leading programme in Europe to develop this dual expertise

EdUniversal 2022

MSc International Sport & Event Management

## Ranked 2nd

EdUniversal 2022

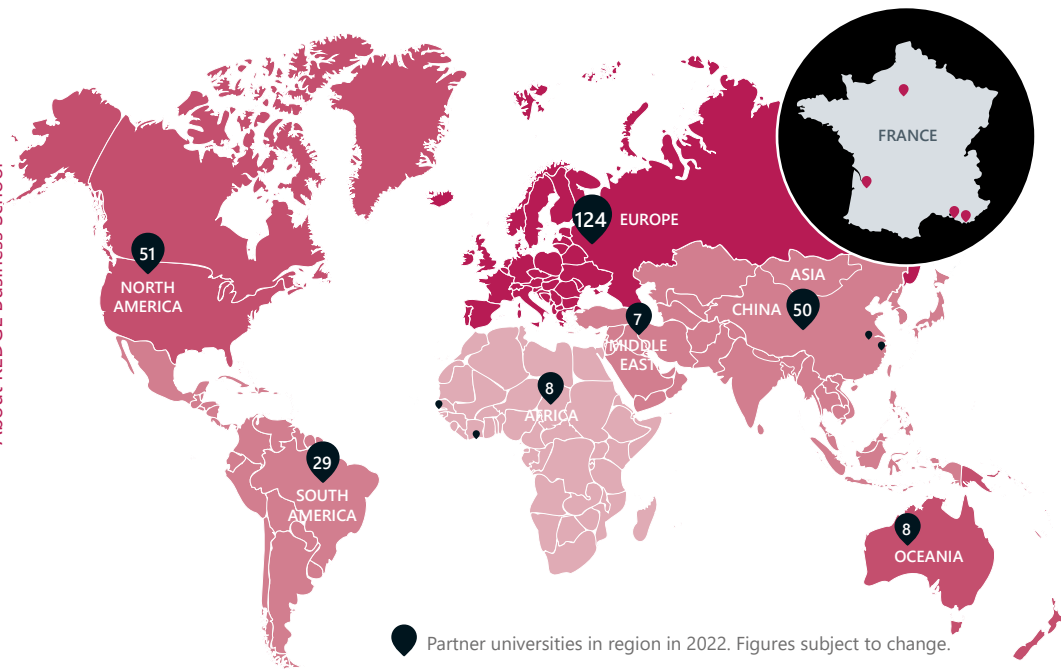


# An International Experience



With an established network of around 280 partnerships with renowned foreign institutions, KEDGE offers a wide range of opportunities for students to combine study and experience abroad, through exchange programmes and double degrees.

Students develop the tools to understand cultural, social and economic contexts in order to be confident in the professional world, immerse themselves in a different culture, experience different teaching methods, develop openness and agility, acquire a global perspective, improve or learn a foreign language and create an international network.



About KEDGE Business School



# Entrepreneurship at KEDGE

With entrepreneurship firmly embedded in its pedagogy, KEDGE Entrepreneurship was created to develop the entrepreneurial know-how of students. KEDGE offers three entrepreneurship support programmes for beginners or experienced entrepreneurs, with many KEDGE programmes providing training in entrepreneurship as part of their programme.



## Business Creator:

For students who want to be an entrepreneur and who have an idea.

Students will develop skills on startup methods and entrepreneurial posture and discover the principles of the lean startup approach.



## Business Nursery:

For those who want to get started.

KEDGE gives support in the creation of a startup, confronting the product or service with the reality of the market by putting entrepreneurs in touch with KEDGE partner companies. KEDGE facilitates obtaining funding for the seed phase via KEDGE institutional partners and companies.



## Business Accelerator:

For entrepreneurs looking for financing help.

Entrepreneurs accelerate the development of startups before or after fundraising on different issues: marketing, strategy, web, business development, product, communication with funders and recruitment.

1000



students trained in Entrepreneurship per year

3200

Alumni Entrepreneurs

120



projects supported per year

# Paris Campus

**KEDGE**  
BUSINESS SCHOOL



Located in the heart of the city in the exceptional Lumière Building, one of Paris's largest business centres (and business ecosystems), KEDGE Paris is a place of versatility, designed as a bridge between innovation and people, placing entrepreneurship at the centre of the school's philosophy.



Located within the 135,000 m<sup>2</sup> Lumière building which contains 33 classrooms, 12 brain bubbles and one amphitheatre seating up to 80 students.



KEDGE shares facilities with major companies including Natixis, SNCF, ING Direct, Société Générale and the Ministry of the Interior.



Immersive rooms enable students to work on practical case studies using giant screens streaming classes or conferences held on the school's other sites.

## Undergraduate degree you can progress to

### Business, Economics, Finance and Management pathway

English Required IELTS equivalent: 6.0\* - no component lower than 5.5  
Pass Mark for progression: 50% in academic modules

KEDGE Bachelor

\*Progression to KEDGE is possible from IELTS 5.5

## Master of Science degrees you can progress to

### Business, Economics, Finance and Management pathway

English Required IELTS equivalent: 6.0  
Pass Mark for progression: 50% in academic modules

MSc Arts & Creative Industries Management

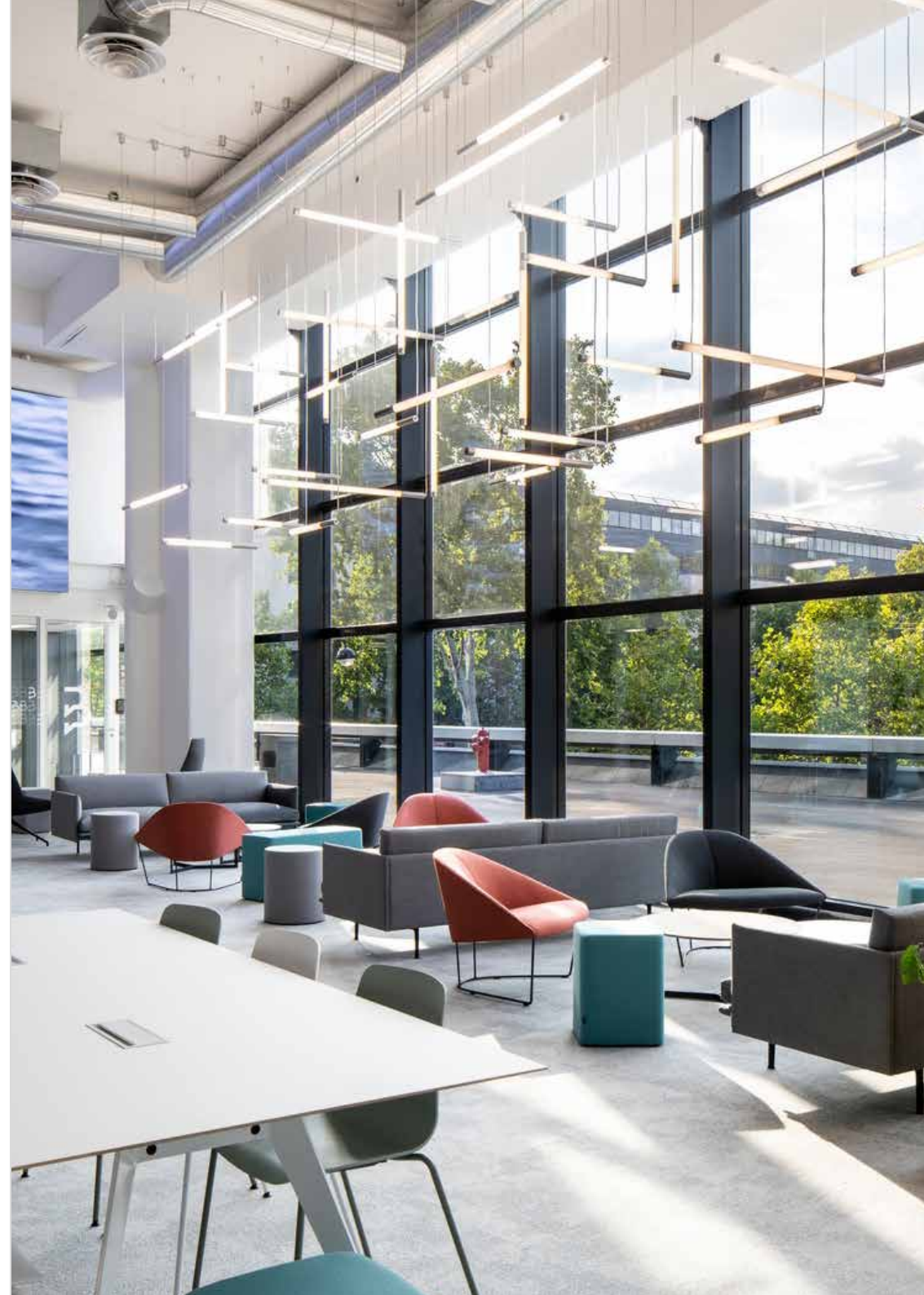
MSc Marketing

MSc Business Transformation for Sustainability

MSc Sustainable Finance

MSc International Business

MSc Wine and Hospitality Management  
Students require IELTS 7.0 or equivalent for progression



# Marseille Campus

**KEDGE**  
BUSINESS SCHOOL

KEDGE Marseille is based at the Luminy campus nestled on the edge of the Calanques National Park. The campus is one of the leaders in the field of education, providing sustainable, innovative facilities and teaching equipment.



**The Daniel Carasso KEDGE Accelerator** is a space dedicated to business startups, equipped with the latest technologies. Set up on the Marseille Campus, this online platform is committed to supporting hundreds of projects every year.

**22 Brain bubbles**, spaces dedicated to collective reflection sessions.



**21,000m<sup>2</sup> campus**, 57 classrooms, 6 amphitheatres, 220 offices for associations, 1 fitness centre, 4 catering areas, 2 hubs that facilitate creation, collaboration and co-working, digital libraries, a **business incubator and Design School**.

## Undergraduate degree you can progress to

### Business, Economics, Finance and Management pathway

English Required IELTS equivalent: 6.0\* - no component lower than 5.5  
Pass Mark for progression: 50% in academic modules

International BBA

\*Progression to KEDGE is possible from IELTS 5.5

## Master of Science degrees you can progress to

### Business, Economics, Finance and Management pathway

English Required IELTS equivalent: 6.0  
Pass Mark for progression: 50% in academic modules

\*This programme is partly taught in French.

MSc Audit and Performance Management\*

MSc International Business

MSc Corporate Finance

MSc International Sport & Event Management

MSc Digital Marketing & Sales

MSc International Trade & Logistics

MSc Innovation, Transformation, Entrepreneurship

MSc Marketing

## Postgraduate degree you can progress to

### Business, Economics, Finance and Management pathway

English Required IELTS equivalent: 6.0  
Pass Mark for progression: 50% in academic modules

Master in Management Grande École<sup>1</sup>  
plus GMAT or GRE exam

<sup>1</sup>Progression for students who hold a three year Bachelors degree (or 180 ECTS) is only available via the long track pathway.



**Marseille** is a vibrant city surrounded by the mountains and the Mediterranean Sea

Closest international airport is **1 hour away**



**Marseille** is one of the most multicultural French cities

**2nd** largest French city known for its cultural dynamism and economic attractiveness



Marseille has the largest European **National Park**



# Bordeaux Campus

**KEDGE**  
BUSINESS SCHOOL



Located on the Talence campus 30 minutes away from the city centre by tram and spread over 35,000m<sup>2</sup>, the campus is designed to provide the most innovative facilities to meet students' needs. Bordeaux has experienced a strong growth of highly skilled professionals, and the services sector accounts for 86% of its economic fabric. As France's top ranked city for quality of life and attractiveness\*, Nouvelle Aquitaine is France's leading region for job creation since 2009 with business hubs in:

**tertiary professional education (insurance, banking, marketing, communication), digital, aeronautics, health-biotech, laser optics, green growth and the wine sector.**



49 lecture rooms, language labs, computer rooms, 20 amphitheatres with a **capacity of 60 to 500 seats** for teaching, seminars or meetings.



**A trading room** animated by professors and by the finance transaction association.



**The Business Nursery** and the **Business Accelerator**, both dedicated to entrepreneurship development.

## Master of Science degrees you can **progress to**

### Business, Economics, Finance and Management pathway

English Required IELTS equivalent: 6.0

Pass Mark for progression: 50% in academic modules

MSc Banking and Finance

MSc Data Analytics for Business

MSc International Business

MSc ISLI - Global Supply Chain Management

MSc MAI - International Purchasing and Innovation Management

MSc Marketing

MSc Wine and Hospitality Management

Students require IELTS 7.0 or equivalent for progression

MSc MVS - Wine and Spirits Management<sup>1</sup>

Students require IELTS 6.5 or equivalent for progression

## Postgraduate degree you can **progress to**

### Business, Economics, Finance and Management pathway

English Required IELTS equivalent: 6.0

Pass Mark for progression: 50% in academic modules

Master in Management Grande École<sup>1</sup> plus GMAT or GRE exam

<sup>1</sup>Progression for students who hold a three year Bachelors degree (or 180 ECTS) is only available via the long track pathway.





## Undergraduate degrees you can progress to

Students who meet the specified entry criteria and pass a Jury Interview are guaranteed progression at KEDGE Business School.

### Business, Economics, Finance and Management pathway

English Required IELTS equivalent: 6.0\* - no component lower than 5.5  
Pass Mark for progression: 50% in academic modules

International BBA	KEDGE Bachelor
	*Progression to KEDGE is possible from IELTS 5.5

## Master of Science degrees you can progress to

Students who meet the specified entry criteria and pass a Jury Interview are guaranteed progression at KEDGE Business School.

### Business, Economics, Finance and Management pathway

English Required IELTS equivalent: 6.0  
Pass Mark for progression: 50% in academic modules

MSc Arts and Creative Industries Management	MSc International Trade & Logistics
MSc Audit and Performance Management*	MSc ISLI - Global Supply Chain Management
MSc Banking and Finance	MSc MAI - International Purchasing and Innovation Management
MSc Business Transformation for Sustainability	MSc Marketing
MSc Corporate Finance	MSc Sustainable Finance
MSc Data Analytics for Business	MSc Wine and Hospitality Management Students require IELTS 7.0 or equivalent for progression
MSc Digital Marketing & Sales	MSc MVS - Wine and Spirits Management! Students require IELTS 6.5 or equivalent for progression
MSc Innovation, Transformation, Entrepreneurship	
MSc International Business	
MSc International Sport & Event Management	*This programme is partly taught in French

## Postgraduate degree you can progress to

Students who meet the specified entry criteria and pass a Jury Interview are guaranteed progression at KEDGE Business School.

### Business, Economics, Finance and Management pathway

English Required IELTS equivalent: 6.0  
Pass Mark for progression: 50% in academic modules

Master in Management Grande École! plus GMAT or GRE exam	*Progression for students who hold a three year Bachelors degree (or 180 ECTS) is only available via the long track pathway.
---	--



# How ONCAMPUS Works

Our programmes at **ONCAMPUS** Paris are designed for international students who do not meet the requirements for direct entry to study at KEDGE Business School.



## Increase your English language level

- Academic writing skills
- Academic reading skills
- Presentation and discussion skills
- Listening and note taking

## Improve academic grades and study skills

- Additional year of study equivalent to 13 years of UK study for undergraduate degree
- Demonstrate academic level to meet KEDGE requirements
- Present higher grades in Pathway programme than achieved at high school for undergraduate entry
- Learn the study skills essential for success at KEDGE Business School
- Additional research study skills for Master's students

## Expert progression support

- Expert guidance on which degree to progress to
- One-to-one support sessions
- Faculty visits and meetings

## Progress to degree

About ONCAMPUS

## ONCAMPUS gives you...

### Outstanding teaching and support

Through every step of your journey with us, you will be supported by highly qualified teachers and support staff, both inside and outside the classroom.

Your personal tutor will meet with you regularly to ensure you are on track to pass the programme and progress to your chosen degree.

Your personal tutor is also there to help you with any issues you might have inside or outside the classroom.

### A proven track record of success

ONCAMPUS is part of Cambridge Education Group, one of the UK's leading university pathway providers since 1952.

Cambridge Education Group was the first private institution to offer university foundation programmes in the UK in 1985, and successfully prepares thousands of students for top universities in the UK, Europe and the U.S. every year.

### Part of the Business School from day one

The **ONCAMPUS** centre is located at the heart of KEDGE Business School, close to all of its facilities.

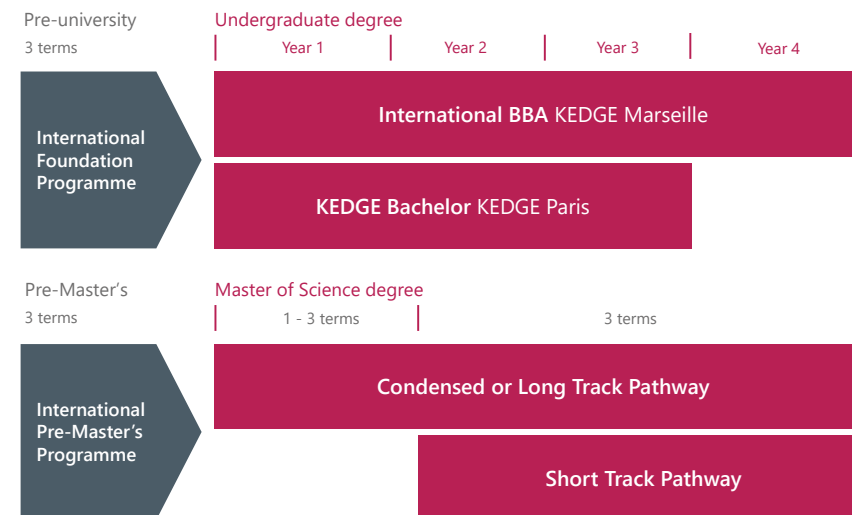
You will receive a student card, and with it you will have access to some of the Business School's facilities, clubs and societies while you study your **ONCAMPUS** programme.

You will meet your course leader at the Business School before you start your degree, and have the opportunity to try out some of the excellent facilities.

# Your route to a degree at KEDGE Business School

**ONCAMPUS** Paris offers guaranteed progression\* to a range of undergraduate and postgraduate degrees at KEDGE Business School, on successful completion of our Foundation programmes.

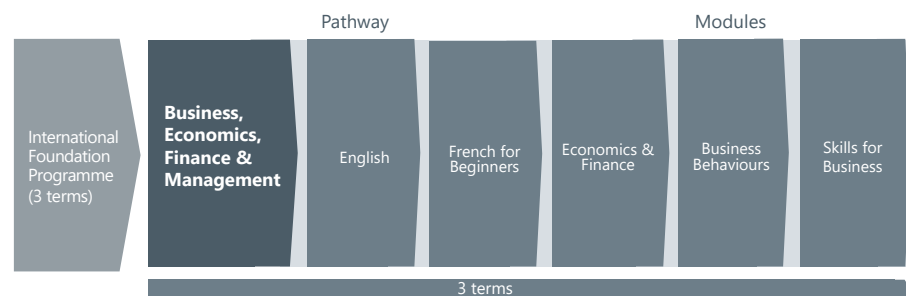
\*subject to meeting the specified entry criteria



# International Foundation Programme (IFP)

This programme gives guaranteed progression<sup>1</sup> to Year 1 of two undergraduate programmes at KEDGE Business School.

## Degree progression route



IELTS 4.5  
English language level

## Entry criteria

**English level:** From 4.5 IELTS or equivalent

**Minimum age:** 17+

<sup>1</sup> Guaranteed progression is subject to meeting the specified entry criteria and a successful Jury interview.

**Academic requirements:** 11-12 years  
Successful completion of 11-12 years of schooling with good grades. Please see [www.oncampus.global](http://www.oncampus.global) for country-specific academic entry requirements.

For progression degrees, see page 16

Pass mark from academic modules for guaranteed progression

English level required (IELTS equivalent) for progression

50%

6.0  
(Progression to KEDGE is possible from IELTS 5.5)



IELTS 6.0

Dates	Number of terms	Tuition fee	Progressing to undergraduate degree starting in
25th September 2023 - 09th June 2024	3	€19,980	September 2024
08th January 2024 - 09th August 2024	3	€19,980	September 2024

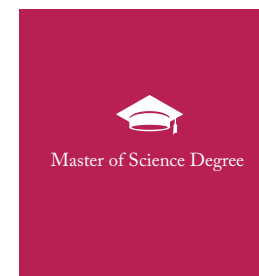
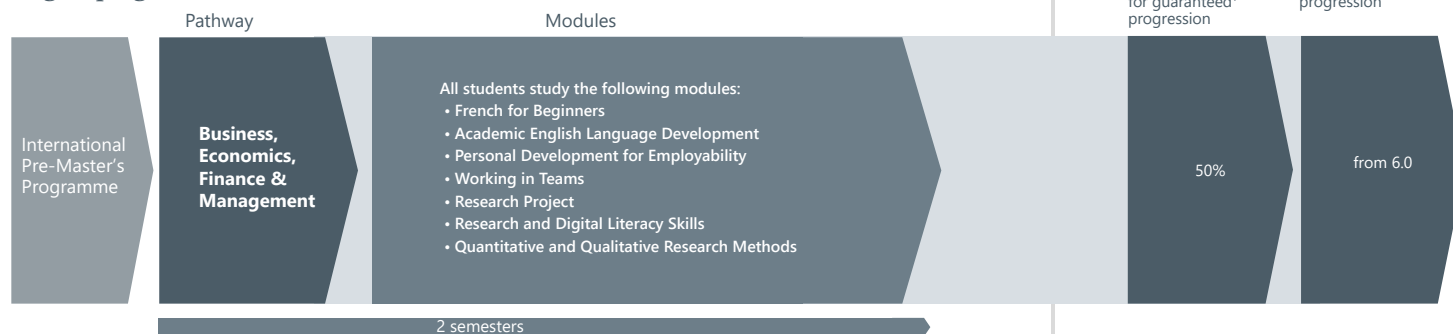
All programmes are subject to a €350 registration fee.  
Module delivery mode may consist of some blended/online hours. For more information on module content visit our website [www.oncampus.global](http://www.oncampus.global)



# International Pre-Master's Programme (IPMP)

The Master's Foundation Programme offers guaranteed progression<sup>1</sup> to a wide range of business-related Master's degrees at KEDGE Business School.

## Degree progression route



IELTS 6.0

IELTS 5.0  
English language level

## Entry criteria

**English level:** From 5.0 IELTS or equivalent

**Minimum age:** 21+

**For guaranteed progression:**

- 50% pass mark in academic subjects
- 6.0 IELTS or equivalent

<sup>1</sup> Guaranteed progression is subject to meeting the specified entry criteria and a successful Jury interview.

**Academic requirements:** Degree Successful completion of Bachelor's degree or equivalent from a recognised university.

For progression degrees see page 16

Dates	Number of semesters	Tuition fee	Progressing to postgraduate degree starting in
25th September 2023 - 03rd May 2024	2	€20,490	September 2024
15th January 2024 - 09th August 2024	2	€20,490	September 2024

All programmes are subject to a €350 registration fee.

Module delivery mode may consist of some blended/online hours. For more information on module content visit our website [www.oncampus.global](http://www.oncampus.global)



# Guide to Paris, France



As the capital city of France, Paris is renowned for its romance, culture and iconic landmarks. It is as diverse as it is sophisticated, with a population of over two million people. Paris is also one of Europe's most visited cities, making it a very popular tourist destination.



## Montmartre

Crowned by the Sacré-Coeur Basilica, historic Montmartre is in the 18th arrondissement and one of Paris's most charming and colourful districts. It is famed for its cobblestone streets, artistic past (and present), and central hill standing at 427 ft (130m) tall.

## Business District La Défense

Located in the west part of the city, La Défense is one of the major business districts in Europe, home to the head offices of the biggest CAC 40 companies, SMEs and startups.



## Champs-Élysées

The most beautiful and well-known avenue in Paris. It connects the Arc de Triomphe with the Place de la Concorde and is considered one of the world's most famous commercial streets.



## Cruise the Seine

Paris is divided by this great river reaching 777 kilometres long. Board a boat for a scenic, panoramic view of the city from the water.



## Fashion

Paris is home to Haute Couture houses such as Dior and Givenchy and luxury fashion brands such as Saint-Laurent, Celine and Hermes.



## Accor Arena - Bercy

is an indoor sports arena and concert hall located in the neighbourhood of Bercy right on the doorstep of KEDGE Business School



Release your inner child and spend a day at one of the world's most renowned theme parks -

## Disneyland Paris



Immerse yourself in culture with Paris being home to some of the most famous museums, including the largest museum on earth the Louvre, housing the world-famous Mona Lisa.

Enjoy the French cuisine, considered some of the best in the world.



# ONCAMPUS Paris CITY GUIDE



[oncampus.global/Paris-city-guide](http://oncampus.global/Paris-city-guide)

DIGITAL **MAP**



# Next Steps



## 1 Submit your application by one of the following methods:

- Online: [www.oncampus.global](http://www.oncampus.global)
- Email: [admissions@oncampus.global](mailto:admissions@oncampus.global)



### Please remember to include all relevant documentation:

- Academic transcripts (with official translations, if not originally in English)
- Evidence of English Language level
- Copy of passport
- Explanation of any study gaps
- Copies of any previous/current visas

Additional documentation may be required depending on the course. Our Admissions team will contact you should this be the case.

## 2 Our Central Admissions team will review your application.



We will send you an offer letter that will list any outstanding conditions. We will remove any conditions that have already been met.

If we think the course is not right for you, we will suggest an alternative.

If we have any queries about your application, we will contact you for further information.

## 3 To accept your place on the course, you will need to meet all the remaining conditions, including payment of the deposit/registration fee or proof of government sponsorship. We can only confirm your place once all conditions have been met, although once the deposit is paid, we will hold a place for you.



Please note that if you require a visa to study with us, you may need to provide additional evidence to comply with the visa regulations in France. These are the requirements of the government and not of ONCAMPUS. Your assistance in meeting these requirements is much appreciated.

## 4 Once you have paid your deposit and met all the conditions of the offer, we will confirm your place and send you a Certificate of Registration (CoR).



## 5 If you need to apply for a visa to study in France, you will need to include your CoR as part of the supporting documents. You can start your visa application three months before the start of the course. It is your responsibility to obtain a visa before you can travel to join the course. If you do not have a valid visa for studies in France, you will not be able to join the course. Please contact us should you require any assistance or guidance with your visa application.



## 6 We will send you pre-arrival information.



Pre-arrival information will include details on arriving in the Centre and what to bring with you and accommodation options. An accommodation application form will be included in the pre-arrival information. You should complete the form, selecting your preferred option, and return it to [ONCAMPUS Paris](mailto:ONCAMPUS.Paris) by email to [liveinParis@oncampus.global](mailto:liveinParis@oncampus.global).



At Cambridge Education Group, we care about our planet and our people, and we strive to achieve more.

Follow our latest news

- [@oncampusglobal](#)
- [@oncampus\\_global](#)
- [@oncampus\\_uusa](#)
- [@oncampus.global](#)
- [@studentsofoncampus](#)

### HEAD OFFICE

Cambridge Education Group

51-53 Hills Road, Cambridge,  
CB2 1NT, United Kingdom

Telephone: +44 (0)1223 345698

Email: [admissions@oncampus.global](mailto:admissions@oncampus.global)

Web: [www.oncampus.global](http://www.oncampus.global)

### CENTRE ADDRESS

ONCAMPUS PARIS

KEDGE Business School

Bâtiment Lumière,  
40 Av. des Terroirs de France,  
75012 Paris, France



[www.carbonbalancedprinter.com](http://www.carbonbalancedprinter.com)  
Healeys Print Group - Reg. 2108

Information in this brochure is correct at time of issue in December 2022. ONCAMPUS and the University Partner reserve the right to alter, reschedule or close courses which do not remain viable; students will be informed. Please check our website at [www.oncampus.global](http://www.oncampus.global) for updated information.

**ONCAMPUS**  
PARIS

Visit [www.oncampus.global/paris](http://www.oncampus.global/paris)

