

CALIFORNIA



HAWAII



GREEN RIVER COLLEGE STUDY ABROAD



.....||

CHOOSE YOUR GAP YEAR



Green River
COLLEGE

WE ARE LOCATED NEAR SEATTLE!

www.greenriver.edu/GapYear

WASHINGTON

AUSTRALIA & NEW ZEALAND





I DIDN'T KNOW WHAT I WANTED TO STUDY YET, SO I DECIDED TO TAKE A GAP YEAR." ~Lisa Vessies
The Netherlands

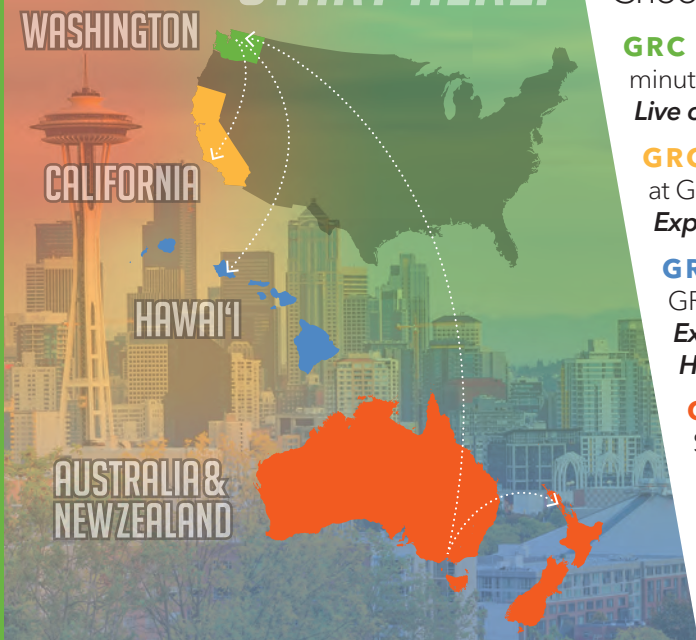


I WAS FAIRLY CERTAIN I WANTED TO BE A PILOT BEFORE MY GAP YEAR. HOWEVER, COMING TO GREEN RIVER JUST CONFIRMED THIS." ~Pascal Weber
Germany

GREEN RIVER COLLEGE HELPED ME ACHIEVE MY GOAL OF BEING ACCEPTED INTO COPENHAGEN BUSINESS SCHOOL." ~Jacob Kristensen
Denmark

GREEN RIVER COLLEGE (GRC) OFFERS EXCITING STUDY ABROAD OPPORTUNITIES FOR HIGH SCHOOL GRADUATES

START HERE.



Choose the academic adventure that works for you:

GRC ONLY » Spend 3, 6 or 9 months at GRC, located 45 minutes south of Seattle and 3 hours south of Vancouver, Canada. *Live on campus and take fun and interesting classes.*

GRC TO CALIFORNIA » Spend September to December at GRC and January to May at Santa Barbara City College. *Experience majestic mountains and sandy beaches.*

GRC TO HAWAII » Spend September to December at GRC and January to May at Kapi'olani Community College. *Experience the Pacific Northwest and the beautiful Hawaiian Islands.*

GRC TO AUSTRALIA & NEW ZEALAND » Spend September to December at GRC and January to March in Australia and New Zealand. Return to GRC April to June (optional). *Skip winter and jump right into summer.*

ADMISSION REQUIREMENTS

- » Completed International Student Application
- » Financial/Bank Statement showing at least \$21,600 for 9 months of study, \$14,400 for six months, \$7,200 for three months.
- » \$50 non-refundable application fee
- » 16 years of age by date classes start (for GRC only) 18 + California and Hawaii
17+ Australia & New Zealand
- » Transcripts for last school attended (recommended)
- » Copy of passport photo page

ESTIMATED COSTS

COSTS	QUARTER (3 MONTHS)	ACADEMIC YEAR (9 MONTHS)
Tuition*	\$3,732	\$11,196
Living Expenses	\$3,000	\$9,000
Fees*	\$201	\$603
Books	\$267	\$801
TOTAL	\$7,200	\$21,600

* Based on 12-18 credits per quarter. Note: Expenses for SBCC and Kapi'olani may differ slightly depending on the cost of living and tuition. There are added expenses for Australia & New Zealand including airfare and other program costs.

DATES & DEADLINES PER QUARTER

QUARTER	Preferred Application Deadline	Virtual Orientation	Housing Move-in Day	In-person Orientation	Classes start	Classes end
FALL	-1 August, 2023	6 & 7 September, 2023	20 September, 2023	21 September, 2023	25 September, 2023	14 December, 2023
WINTER	-1 November, 2023	13 & 14 December, 2023	27 December, 2023	28 December, 2023	3 January, 2024	22 March, 2024
SPRING	-1 February, 2024	13 & 14 March, 2024	27 March, 2024	28 March, 2024	1 April, 2024	17 June, 2024
SUMMER	-1 May, 2024	12 & 13 June, 2024	26 June, 2024	27 June, 2024	1 July, 2024	22 August, 2024



APPLY NOW!

CALL: 1 (253) 288-3300

EMAIL: international@greenriver.edu

GREEN RIVER COLLEGE

12402 SE 320th Street
Auburn, WA 98092 USA

Visit www.greenriver.edu/GapYear